

Zenith TOWER J1

FURNISHED APARTMENT

DEVELOPED & CONSTRUED BY ZENITH



Zenith, founded in 2006, is a fully integrated property development company that has delivered over 50 projects in Dubai. Through its 15 In-house companies, Zenith provides comprehensive services including design, construction, development, and post-handover management.



Zenith Property
Development



Zenith
Smart Contracting



Zenith
MEP



Zenith
Technical Services



Zenith
Innovation



Zenith
Art & Craft



Zenith
Facility Management



Zenith
Procurement



Zenith
Furniture



Zenith
IT



Zenith
Interior



Zenith
Technology



Zenith
Architecture & Design



Zenith
Vacation Home



Zenith
Aluminum & Glass



Zenith
Hospitality



Zenith
Partners



Zenith
Digital Media



Zenith Software &
Web Development



Zenith
Lighting



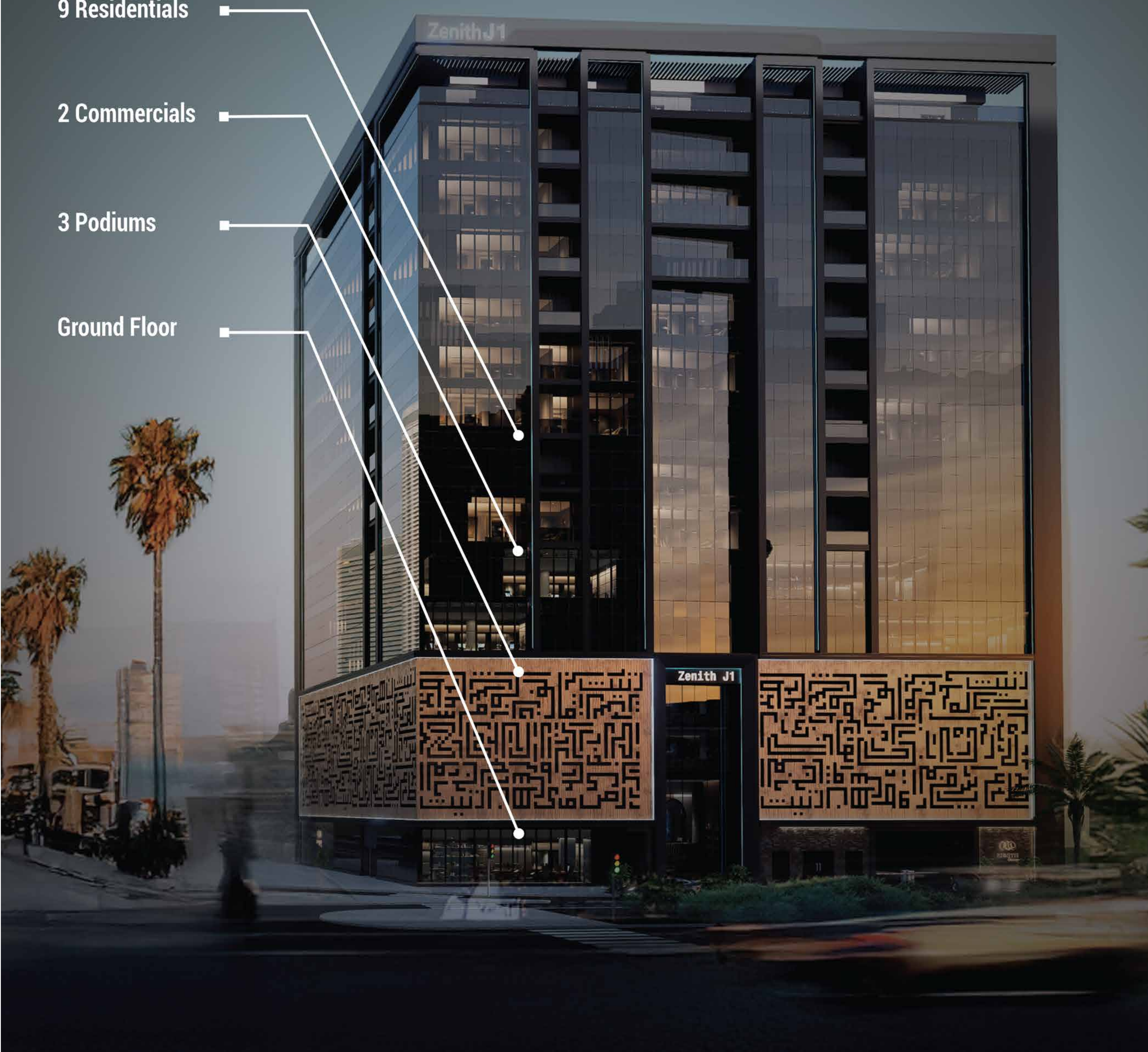
Zenith
Project Management

9 Residentials

2 Commercials

3 Podiums

Ground Floor





OUR IN-HOUSE ACTIVITIES

We take pride in offering a range of services through our own employees, facilities, and equipment, all under Zenith Licenses. These services include:

- **Real estate development of vacation homes**
- **Architecture and interior**
- **Full in-house construction activities**
- **Art, and hand craft design services**
- **Customized Zenith decorative products**
- **Home automation & smart system by Zenith**
- **Property management & shortterm lease vacation home services**



ZENITH J1

Experience
the grand opulence
at heart of Dubai

- 20 MIN
Dubai International Airport (DXB)
- 20 MIN
Jumeirah Beach Residence
- 20 MIN
Dubai Mall / Burj Khalifa
- 5 MIN
Sheikh Zayed Road
- 10 MIN
Al Khail Road
- 20 MIN
Dubai Marina

LOCATION (JVC)

ZENITH TOWER J1 is an impressive mixed-use community situated in Jumeirah Village Circle a family-friendly neighborhood just off Al Khail Road in Dubai.

The tower offers a convenient location with easy access to Dubai's major transportation hubs and key destinations such as Dubai Marina, Palm Jumeirah, Business Bay, Downtown, and Dubai International Airport.

Exciting update: The upcoming Dubai Metro Line will include a station in Jumeirah Village Circle, further enhancing connectivity and making JVC one of the most accessible and desirable communities in the city.



PROJECT SPECIFICATIONS

ZENITH TOWER J1 is a mixed-use development with retail, podiums, and commercial floors. It features a multi-level open air deck with a pool and play area, along with versatile commercial spaces.

The residential apartments offer spacious balconies and are strategically located near Al Khail Road, prestigious schools, and a community park.



24Hr. Security



Smart system



Online service



Carwash



Rent car



Parking



Shuttle service



Business hub



24Hr.
Maintenance



Easy access
to high way

Zenith J1 is a green building that utilizes energy cycling and growth oriented architecture for the purpose of preserving and supporting the environment

Double Glazed Windows

Double Glazed windows provide enhanced insulation by preventing the penetration of cold, heat, and sound which, resulting an improved energy efficiency and a quieter, more comfortable living environment.

Gray Water

Gray water is utilized for watering the plants contributing to water conservation and sustainability

Silent Pipes

Using silent or insulated pipes in a tower reduces the noise caused by water flow in the pipes

Roof Garden

Green roofs offer benefits like improved energy efficiency by providing natural insulation and reducing the urban heat island effect while enhancing biodiversity and aesthetics in urban areas.

LED Lighting

Energy-efficient lighting options to reduce electricity consumption

VRF System

The VRF systems prevent energy wastage through precise control over cooling and heating, leading to cost reduction and aiding in carbon emission reduction.

Solar Panels

The use of solar panels in towers has significant impacts that are associated with the environment, economy, and energy sustainability. We use solar energy for illuminating the facade and outdoor areas of the tower, as well as for water heating

Air To Water Technology

Atmospheric water generation enhances self-reliance, tapping into air moisture for water needs. This eco-friendly method bolsters water security and aligns with green construction principles



HOSPITALITY

GARBAGE DISPOSAL

DOUBLE DECKER CAR PARK

WATER PRESSURE REDULATORS

APPLIANCE WITH AN A+ ENERGY

DOOR LOCK

BLIND CONTROL

SOUND SYSTEM

LIGHTING CONTROL

SMART THERMOSTAT

HOME AUTOMATION

SECURITY SERVICES (OPTIONAL)

Amenities

Coffee Shop



Gym

Kids Play Area



Pet Care

Swimming Pool



Laundry

Kids Swimming Pool



Green Area

Sauna



Tailoring

Bar



Hospitality

Jacuzzi



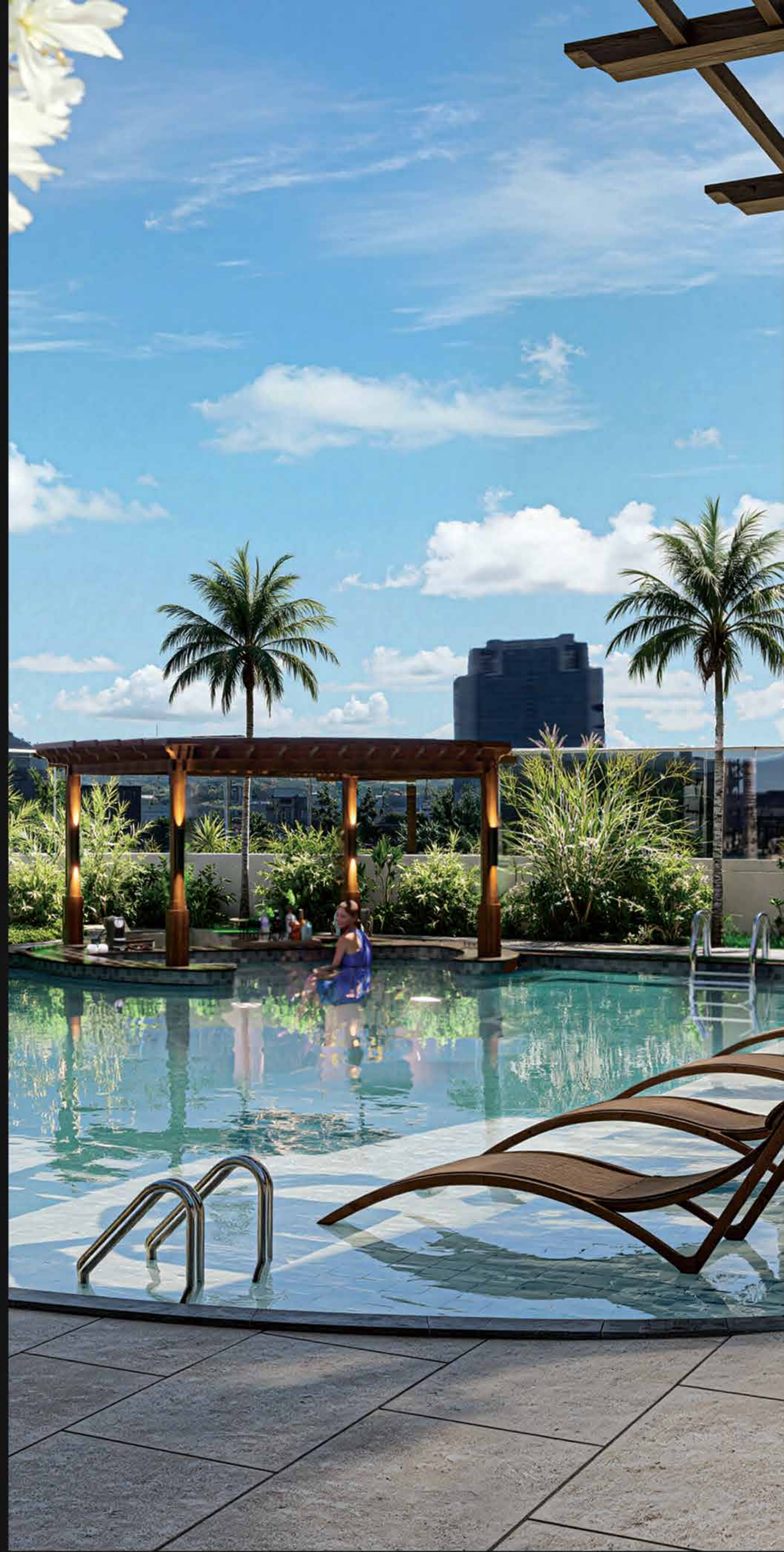
House Maid

Leisure Pool Deck



Shop

Amenities





Swimming Pool

"A serene and refreshing escape designed for relaxation and recreation. Whether you're swimming laps or lounging by the water, our crystal clear pool offers the perfect blend of comfort and leisure."



Coffee Shop



"A cozy and inviting space where rich aromas meet warm conversations. Our coffee shop serves freshly brewed coffee, handcrafted beverages, and delicious pastries perfect for a quick break or a relaxing catch-up."

Gym

"A modern fitness space designed to help you achieve your goals. Equipped with state of the art machines, free weights, and expert trainers your journey to strength, endurance, and wellness starts here."



Property Rental Management

Our management delivers up to 30% higher returns compared to annual rent. Today, we successfully operate almost 1,000 apartments with an occupancy rate exceeding 93%.

Managing 1000+ properties with the precision and efficiency of hotel apartments.

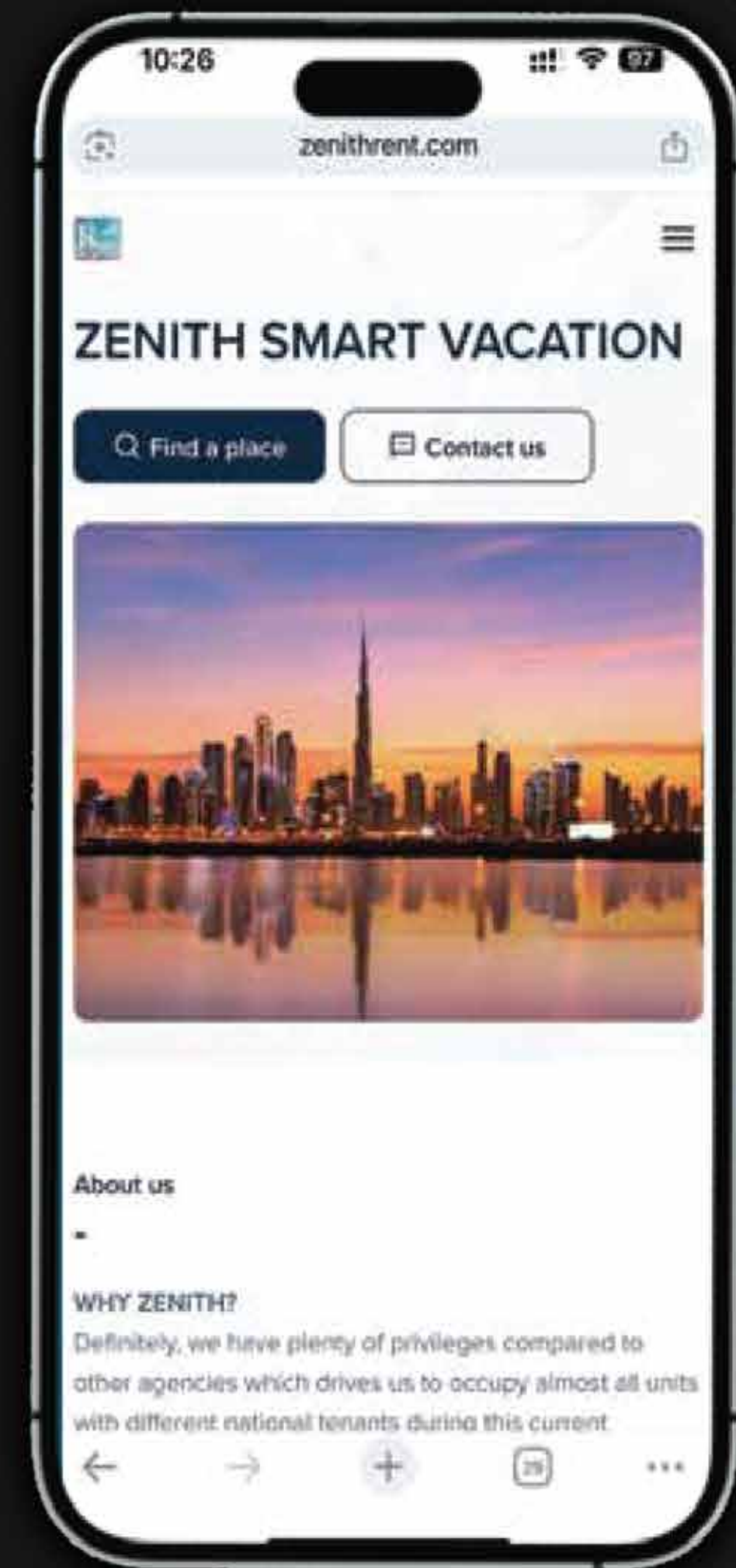
230+
Zenith A1

160+
Zenith A2

325+
Zenith J2

95+
Zenith C1

190+
Others



www.zenithrent.com

Hospitality

Through Zenith's dedicated hospitality platform, residents of the building can effortlessly access a wide array of services at affordable rates, providing unparalleled convenience



Karate



Fitness



DJ



Guitar/Piano



Swimming



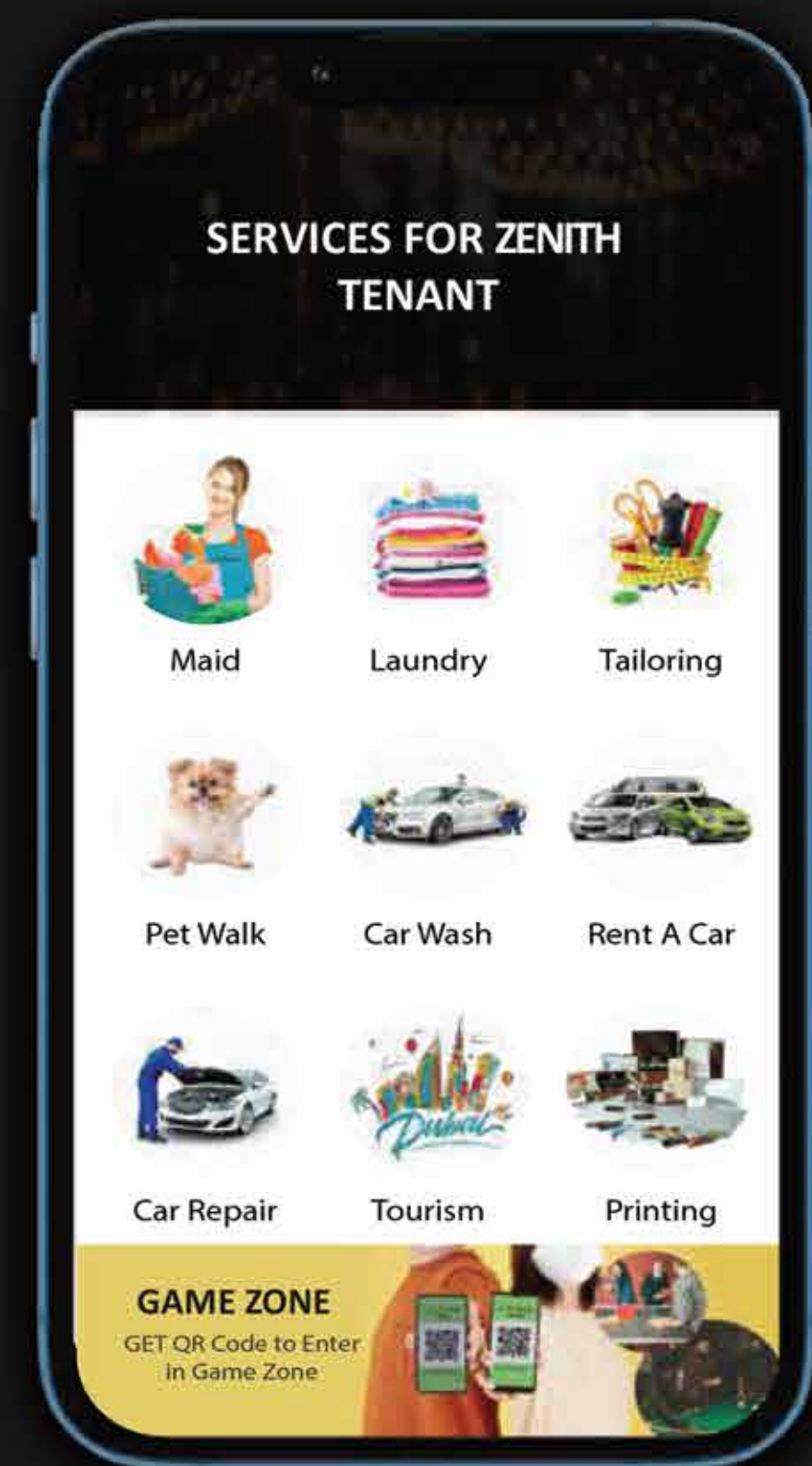
Art & Handcrafts



Web/Graphic Design



LinkedIn Training



www.zenithsupports.com

Clinic



"A specialized clinic dedicated to healthy, radiant skin. With advanced treatments, expert dermatologists, and personalized care, we help you achieve confidence through glowing, flawless skin."

Spa



"A sanctuary of relaxation and rejuvenation, offering holistic treatments, soothing therapies, and a serene ambiance. Our spa is designed to restore balance to your body, mind, and soul."

Beauty Saloon

"A haven of beauty and care, offering expert treatments, modern styles, and personalized services. Step in to relax, refresh, and reveal your best self."



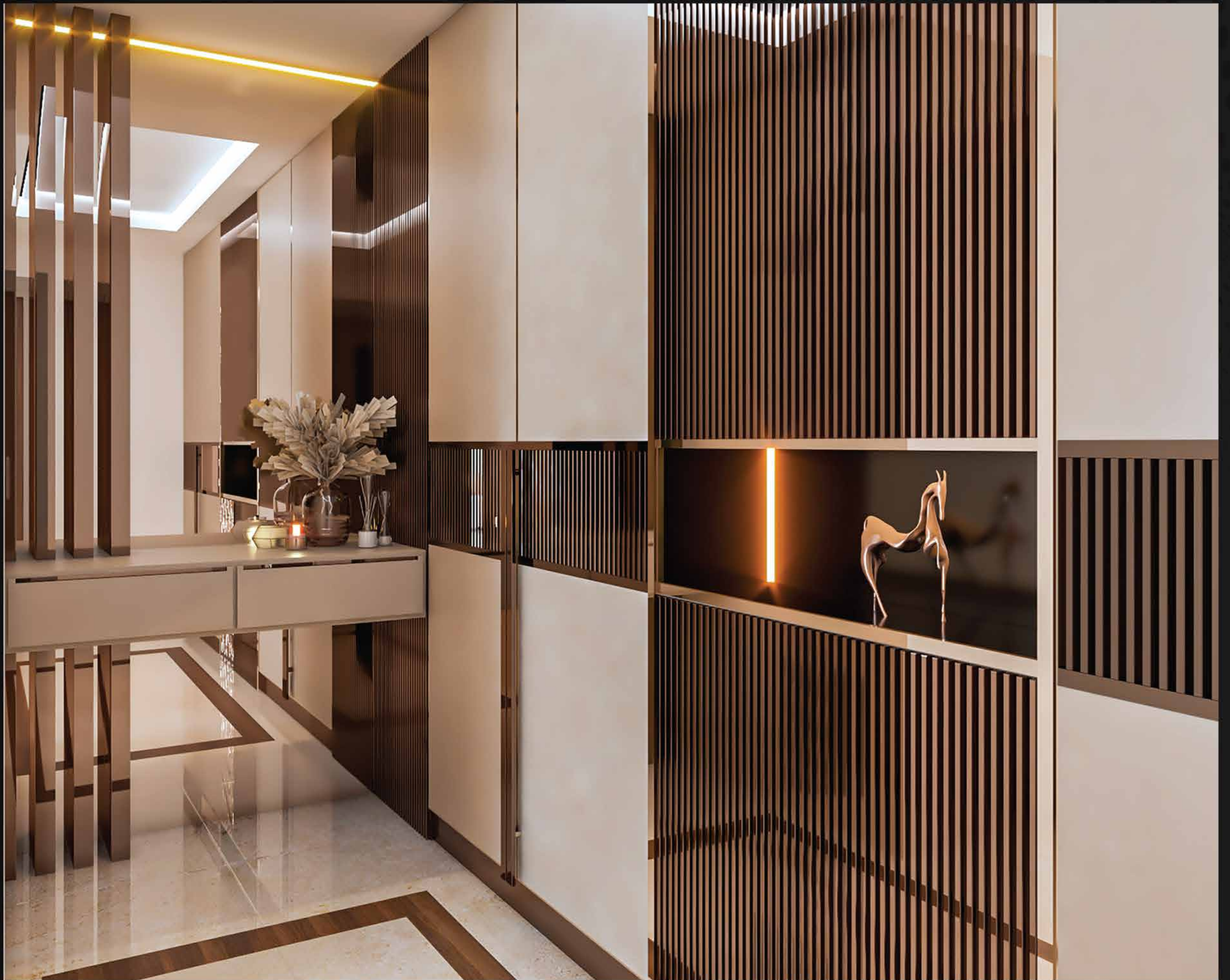
Impressive Lobby



"The lobby is the heart of first impressions a welcoming space that blends comfort, style, and functionality. Designed with elegance and attention to detail, it sets the tone for the entire building experience."



STYLISH INTERIOR DESIGN



"Transforming spaces into personalized environments that blend style, comfort, and functionality. Our designs reflect your personality while enhancing the beauty and purpose of every room."



"Crafting timeless elegance through bespoke materials, refined details, and exquisite finishes where luxury meets lifestyle in every corner of your space."



"Sleek, functional, and minimalist. Our modern interiors are designed with clean lines, open spaces, and smart solutions for a sophisticated living experience."

Hand Craft

We specialize in a variety of different art and handcraft works. Our qualified artists provide masterpieces of art to enhance the decor as per the client's requirements. Here are some of the art and handicraft projects we have executed.

Mural

Gold Leaf

Colored Glass

Patina

Motif



Luxury Design

"Premium leather that adds elegance, durability, and timeless style to apartment interiors."



"A serene retreat designed with elegance and comfort, featuring premium finishes, refined details, and a tranquil ambiance for restful living."



"Luxury design is the art of blending sophistication with comfort, using exquisite materials, bespoke details, and timeless aesthetics to create spaces that inspire and impress."

PAYMENT PLAN

30/70

AT THE TIME OF BOOKING	10%
AFTER 2 MONTHS	10%
AFTER 2 MONTHS	10%
3-YEAR POST-HANDOVER PAYMENT PLAN (No Interest)	70%

Guaranteed Quality - Full Money Back if Finishes Are Not as Promised

Projects



Zenith C1
Jebel Ali, Dubai



Amal Tower
Dubai Sports City, MEP Works



Marble Arch Tower
Business Bay, MEP Works



Private Villa
Al Furjan, Dubai



Compound Villa
Al Barsha, Civil Works



Zenith Tower L1
Liwan, Dubai



Private Villa
Um Al Nahad, Dubai



Labour Camp
Jebel Ali, Dubai



Residentaal Building
Jebel Ali, Dubai



Venezuela Pavilion
Expo 2020, Dubai



Zenith A2
Dubai Sports City



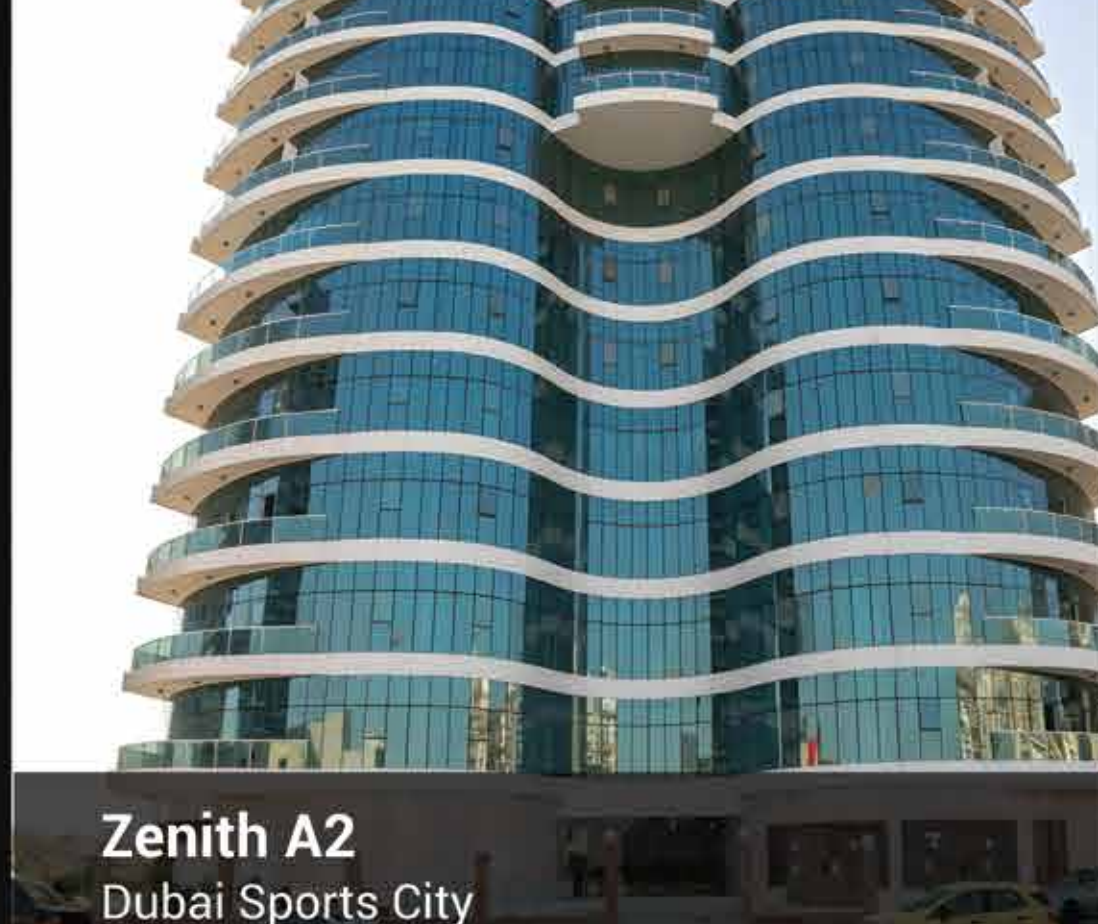
Zenith A1
Dubai Sports City



Private Villa
Al Furjan, Dubai



Iran Pavilion
Expo 2020, Dubai



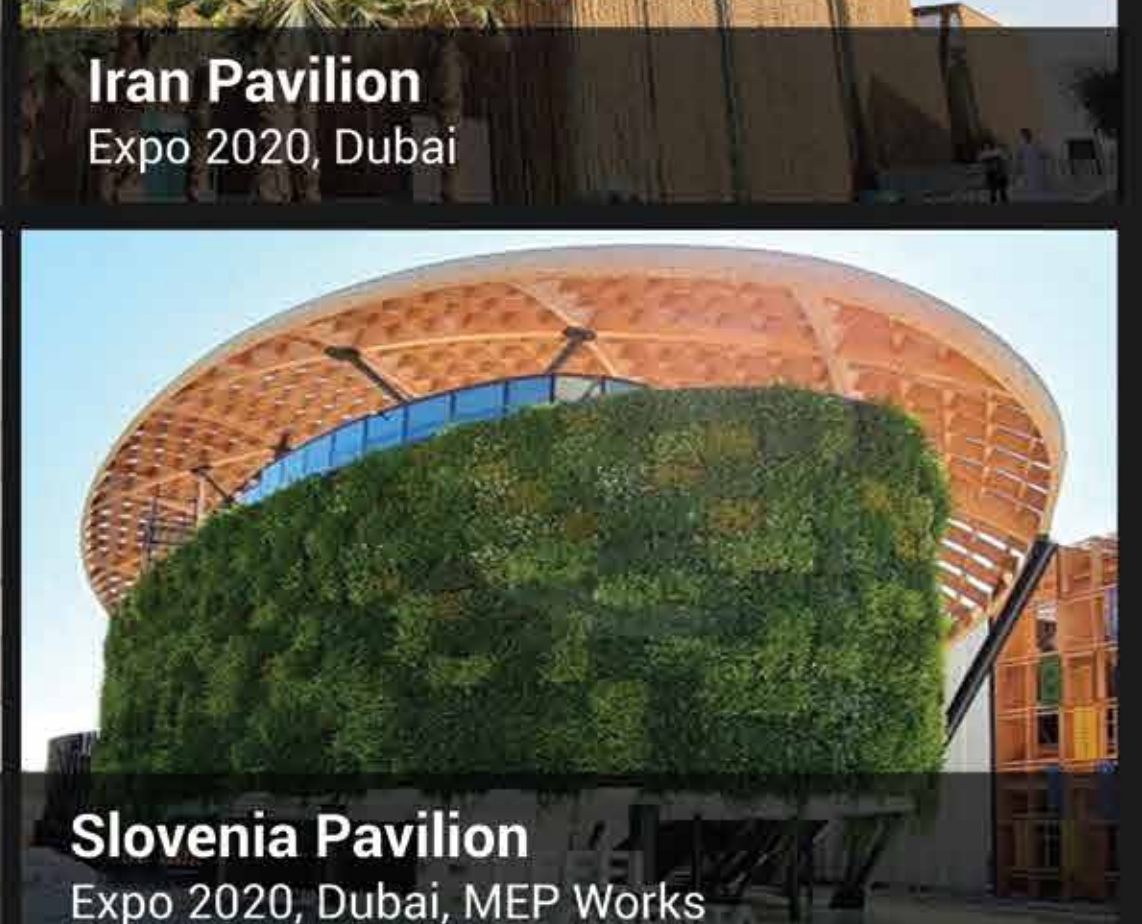
Zenith A2
Dubai Sports City



Hera Tower
Dubai Sports City, MEP Works



G+3 Building
Naif, Dubai



Slovenia Pavilion
Expo 2020, Dubai, MEP Works

On Going & Upcoming Projects



Zenith Tower J1
JVC, Dubai (On going)



ARMAS
Dubai South (On going)



RB74
Dubai South (Up Coming)



Zenith A3
Dubai Sports City (Up Coming)



RC63
Dubai South (Up Coming)



RC19
Dubai South (Up Coming)



RF05 & RF14
Dubai South (Up Coming)



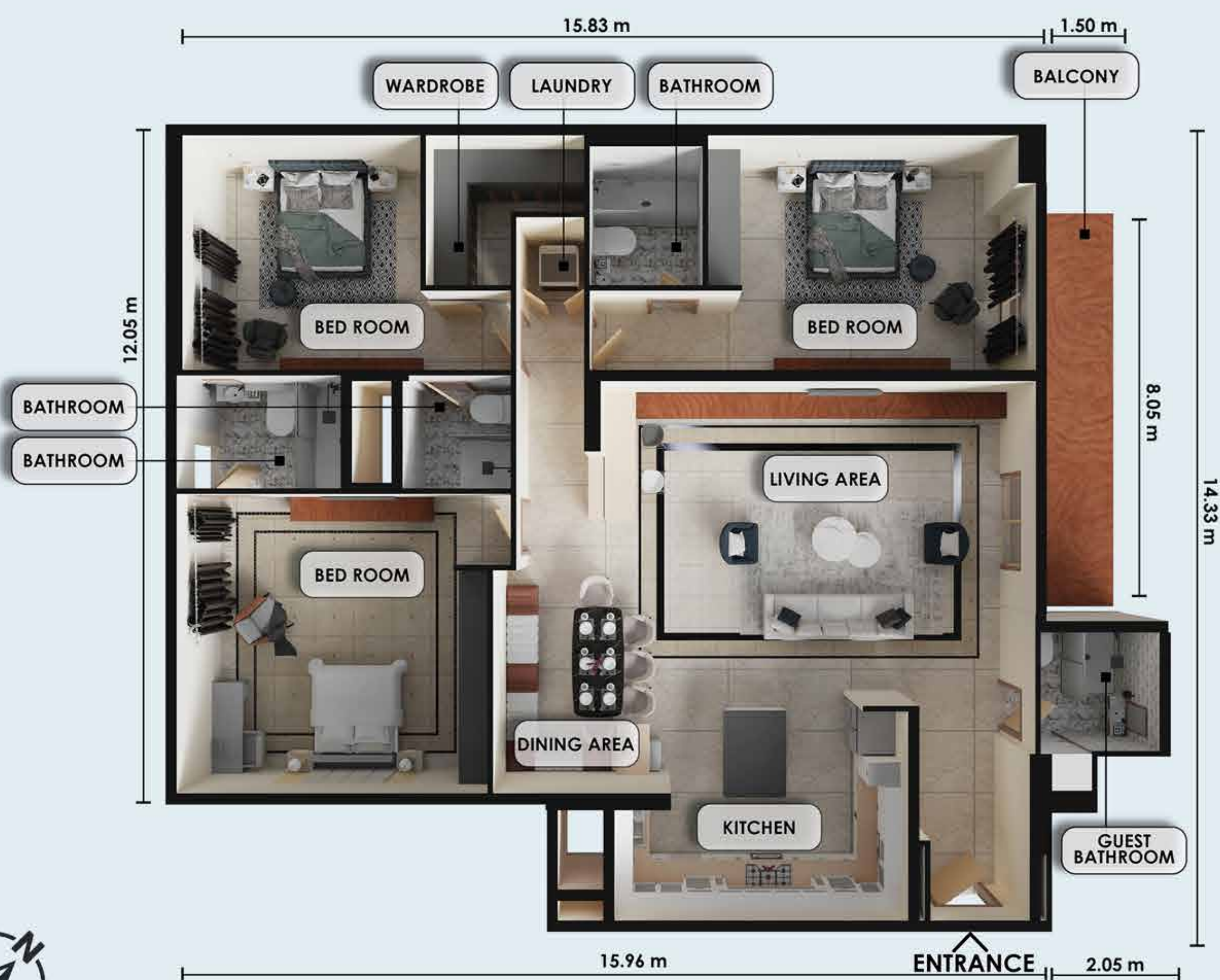
RG20
Dubai South (Up Coming)



RB15
Dubai South (Up Coming)

APARTMENT PLANS

"Discover thoughtfully designed floor plans that maximize space, comfort, and functionality. Each layout is crafted to suit modern living, offering a perfect balance of style and practicality."



Zenith J1, JVC

Typical 3rd - 10th floor

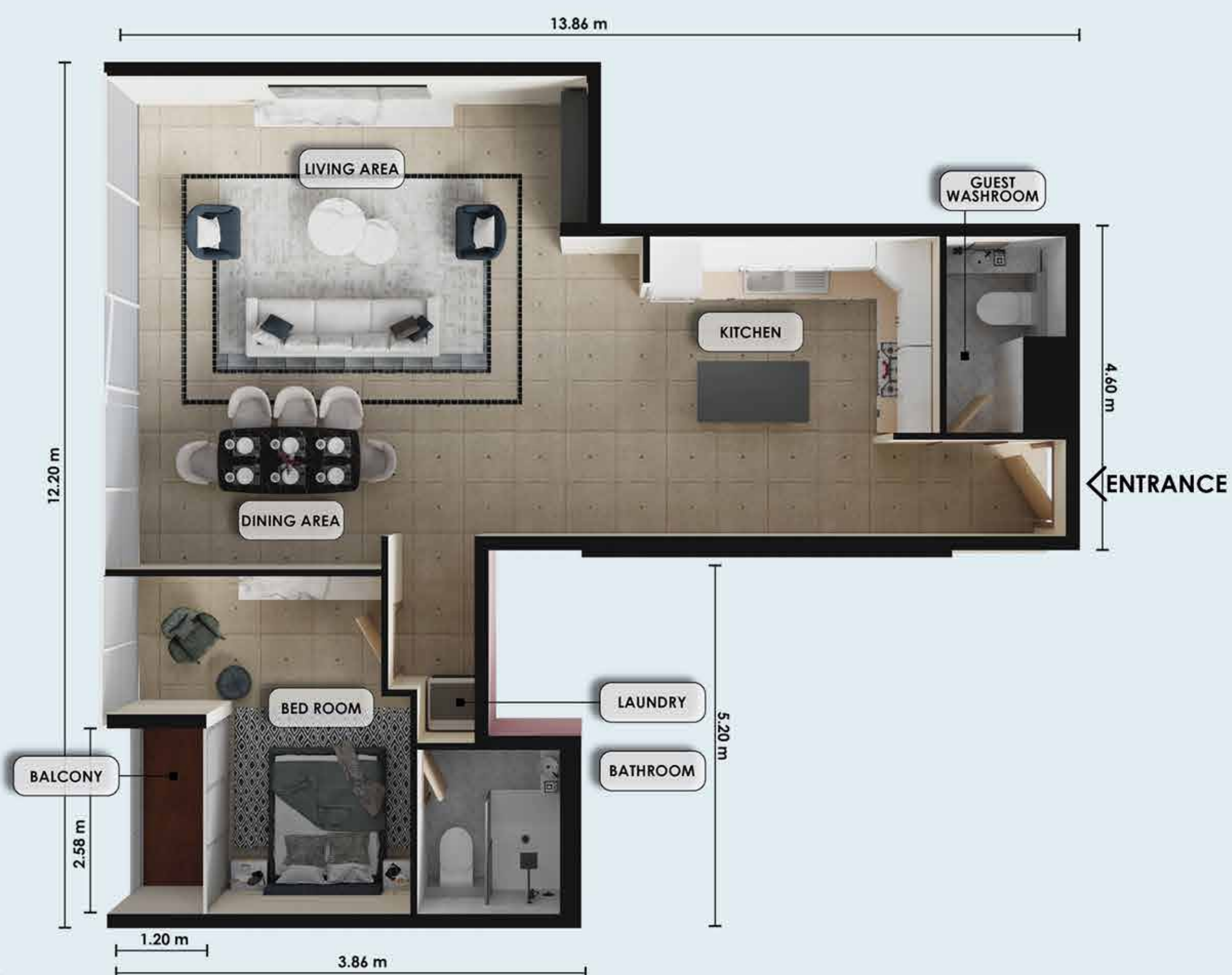
301, 401, 501, 601, 701,
801, 901, 1001

3 Bedrooms

Net Area: 2380.33 sqft.
221.14 sqm.

Balcony: YES





Zenith J1, JVC

Typical 3rd - 10th floor

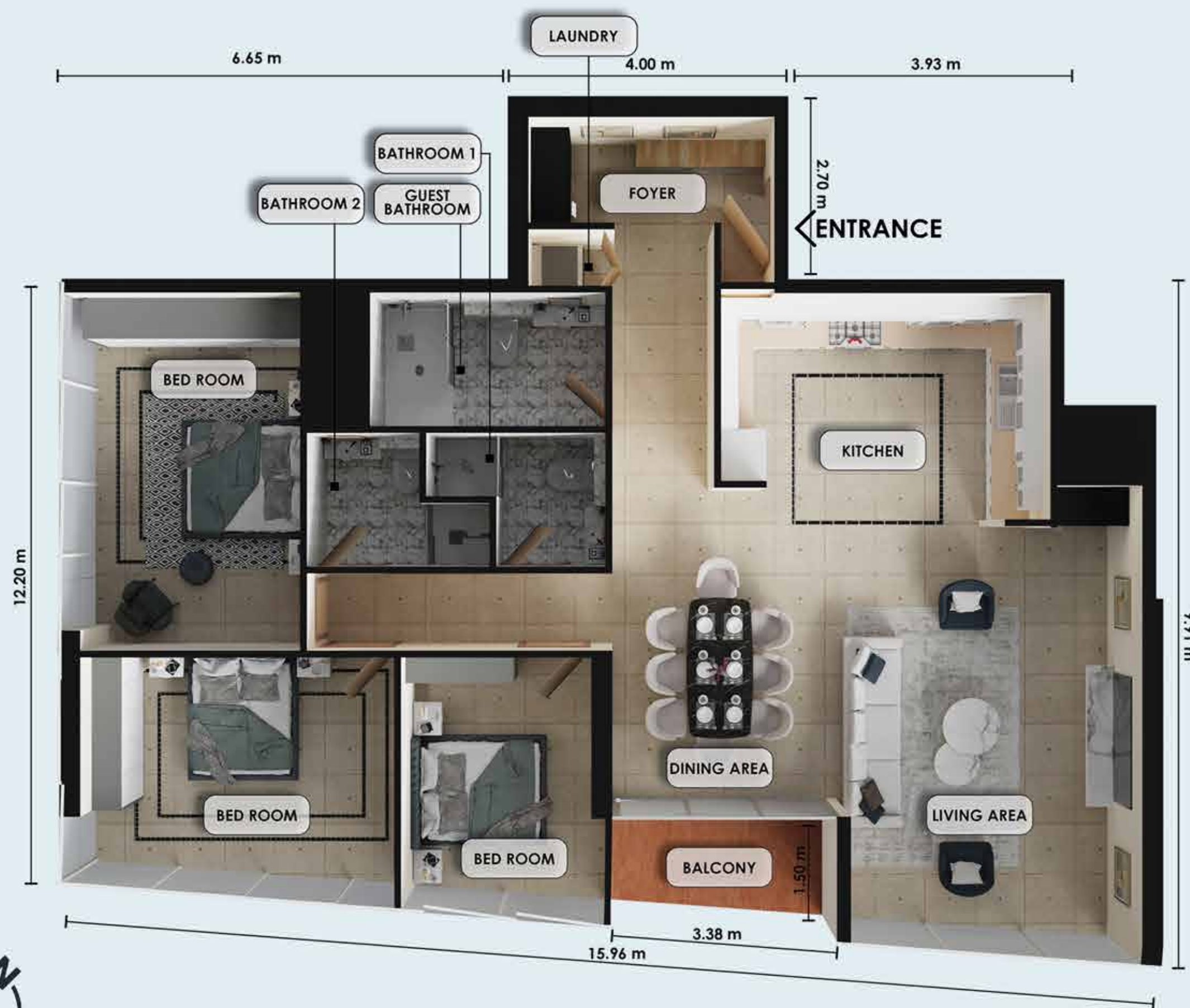
302, 402, 502, 602, 702,
802, 902, 1002

1 Bedroom

Net Area: 1160.02 sqft.
107.77 sqm.

Balcony: YES





Zenith J1, JVC

Typical 3rd - 10th floor

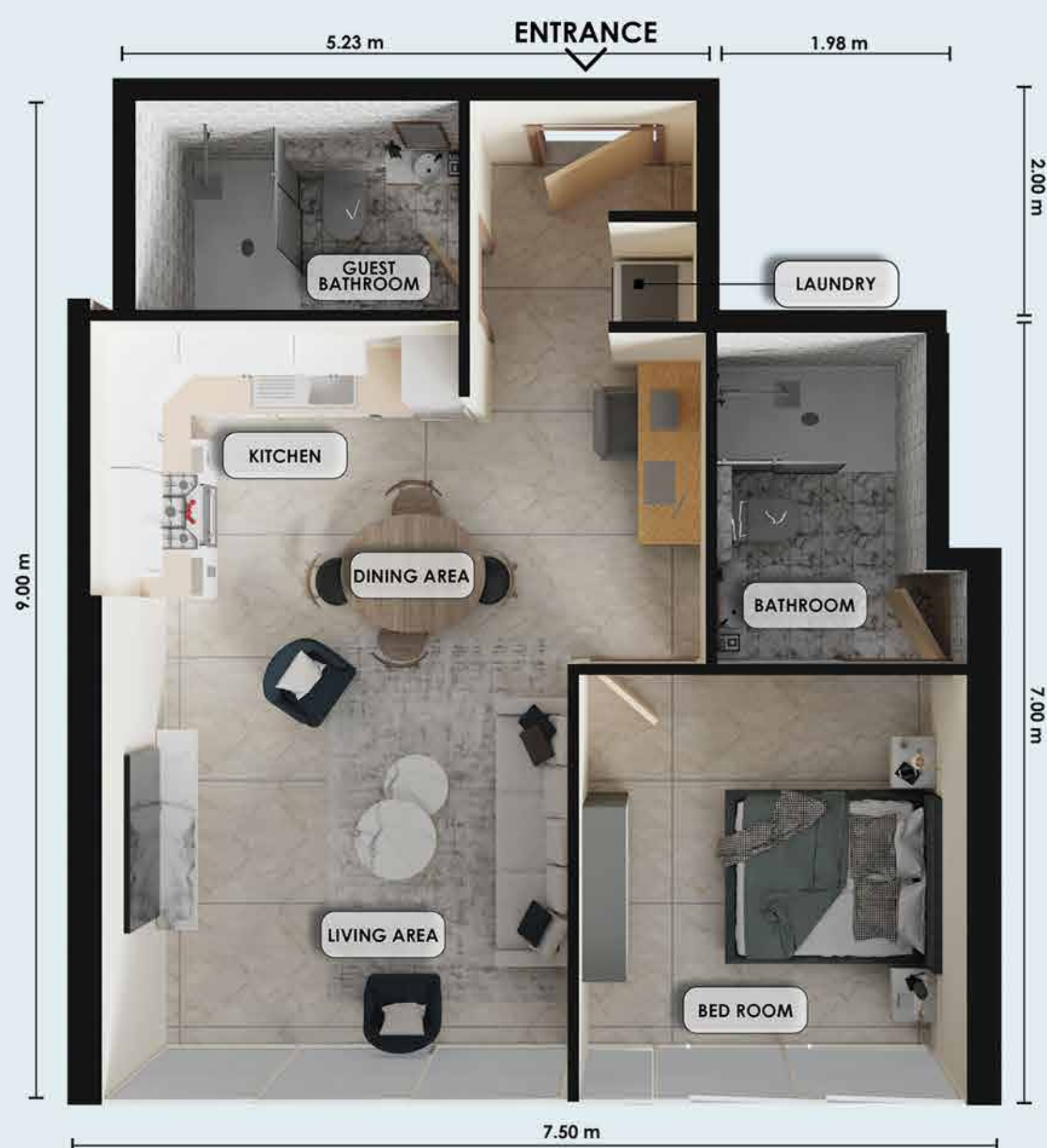
303, 403, 503, 603, 703,
803, 903, 1003

3 Bedrooms

Net Area: 1583.38 sqft.
147.10 sqm.

Balcony: YES





Zenith J1, JVC

Typical 3rd - 7th floor

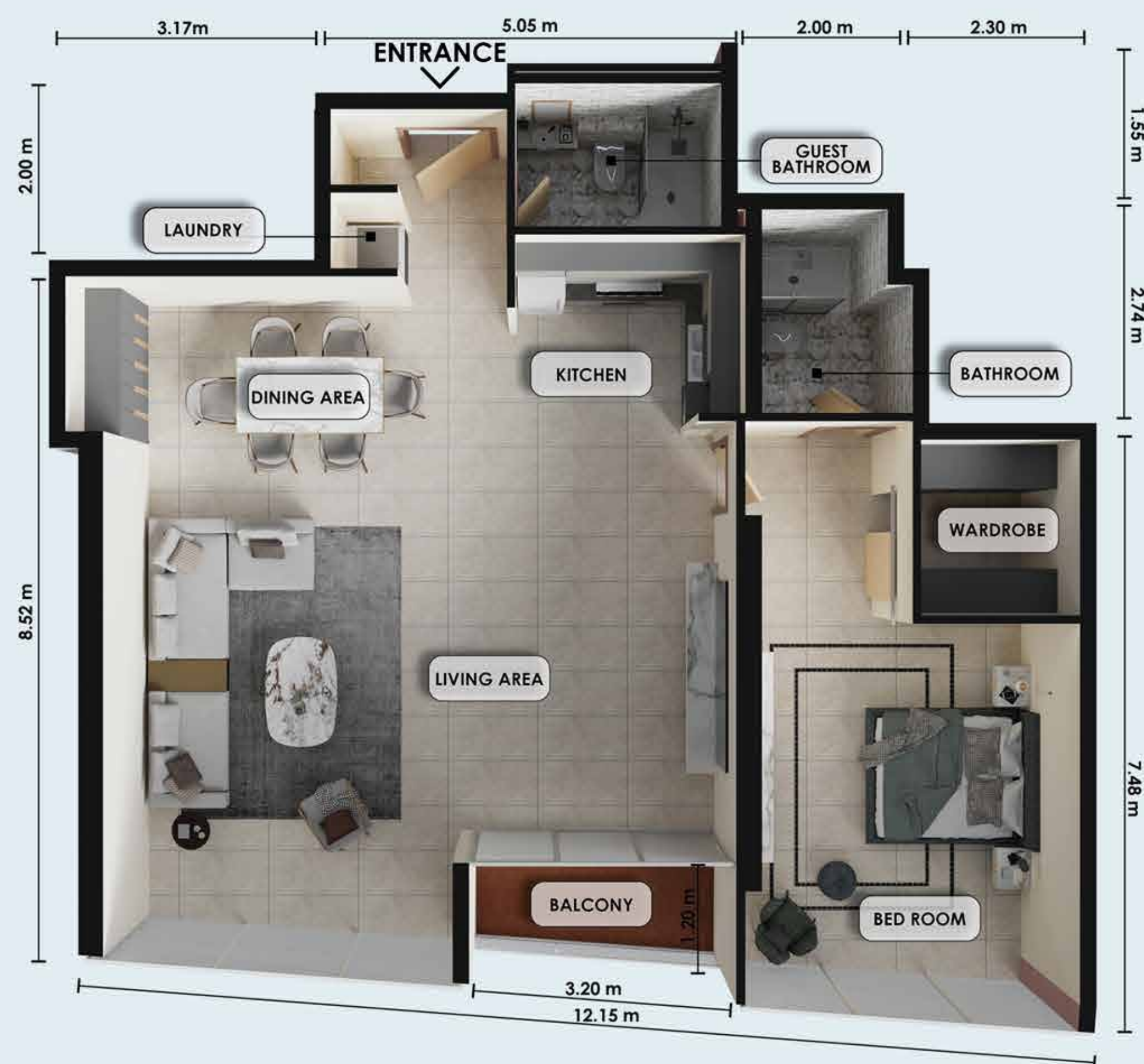
304, 404, 504, 604, 704

1 Bedroom

Net Area: 676.86 sqft.
62.86 sqm.

Balcony: NO





Zenith J1, JVC

Typical 3rd Floor & 8th - 10th

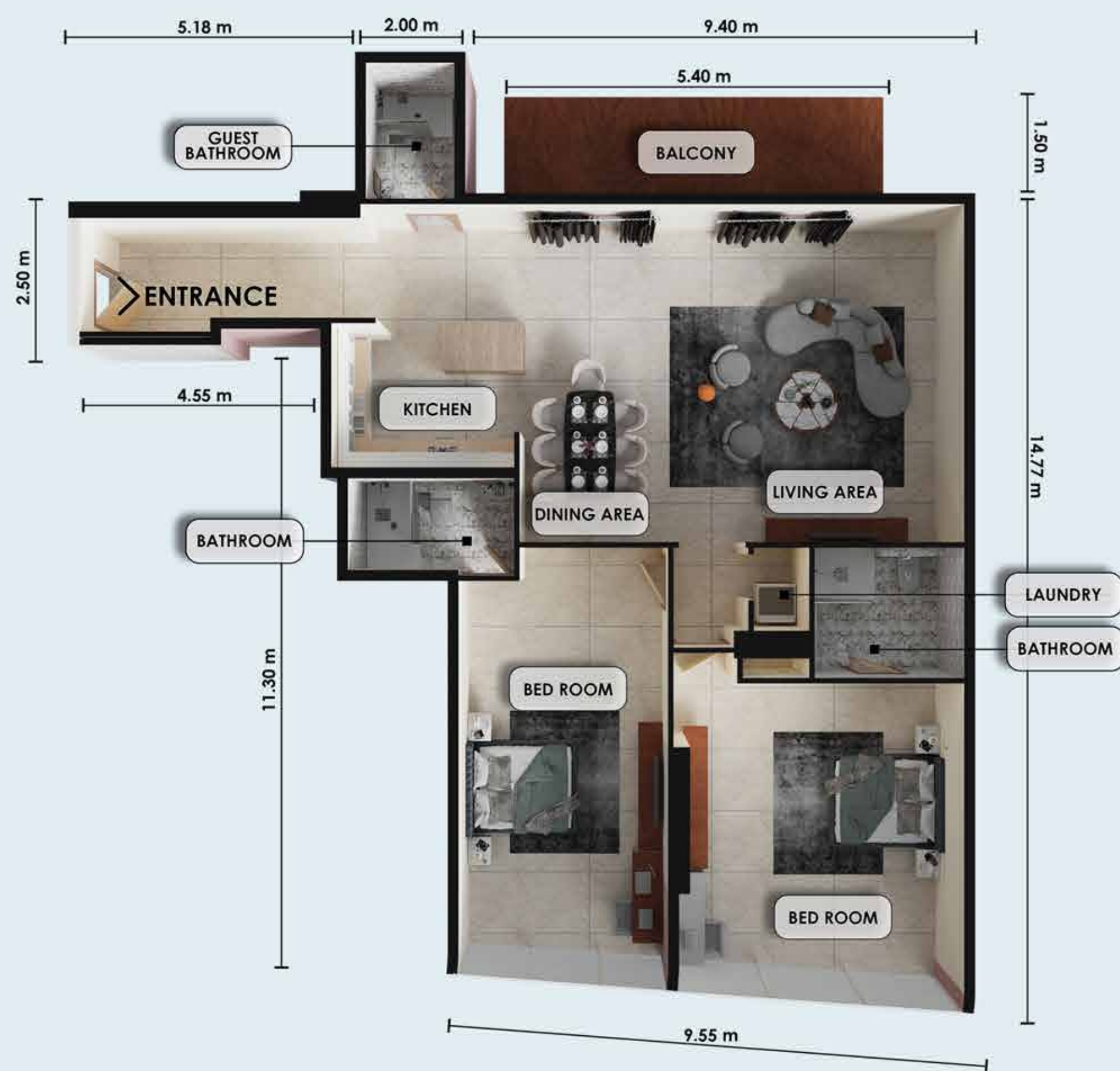
305, 805, 905, 1005

1 Bedroom

Net Area: 1219.55 sqft.
113.30 sqm.

Balcony: YES





Zenith J1, JVC

Typical 3rd Floor & 8th - 10th

306, 806, 906, 1006

2 Bedrooms

Net Area: 1910.60 sqft.
177.50 sqm.

Balcony: YES



Zenith J1, JVC

Typical 3rd - 10th floor

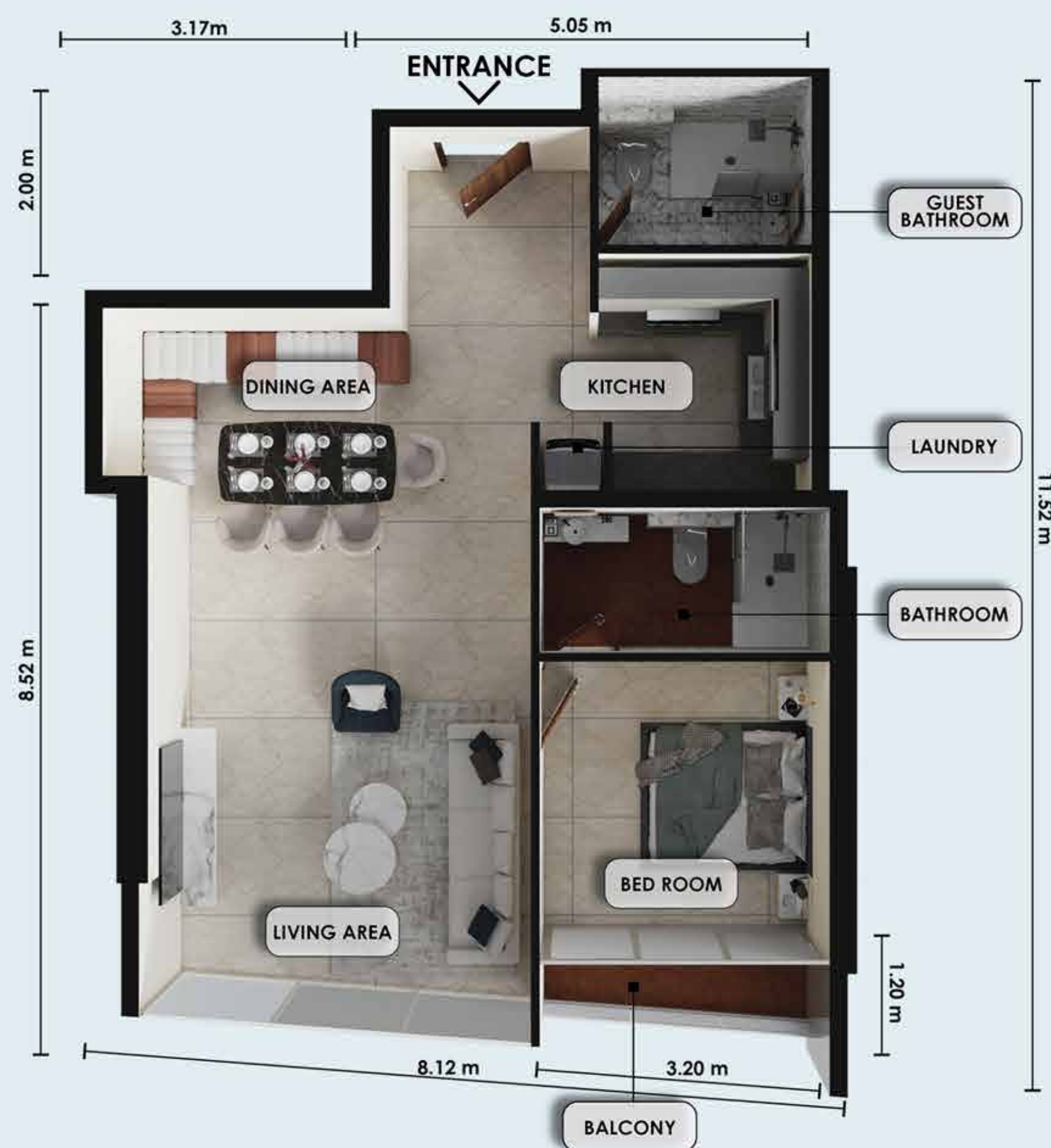
307, 407, 507, 607, 707,
807, 907, 1007

2 Bedrooms

Net Area: 2045.14 sqft.
190.00 sqm.

Balcony: YES





Zenith J1, JVC

Typical 4th - 7th

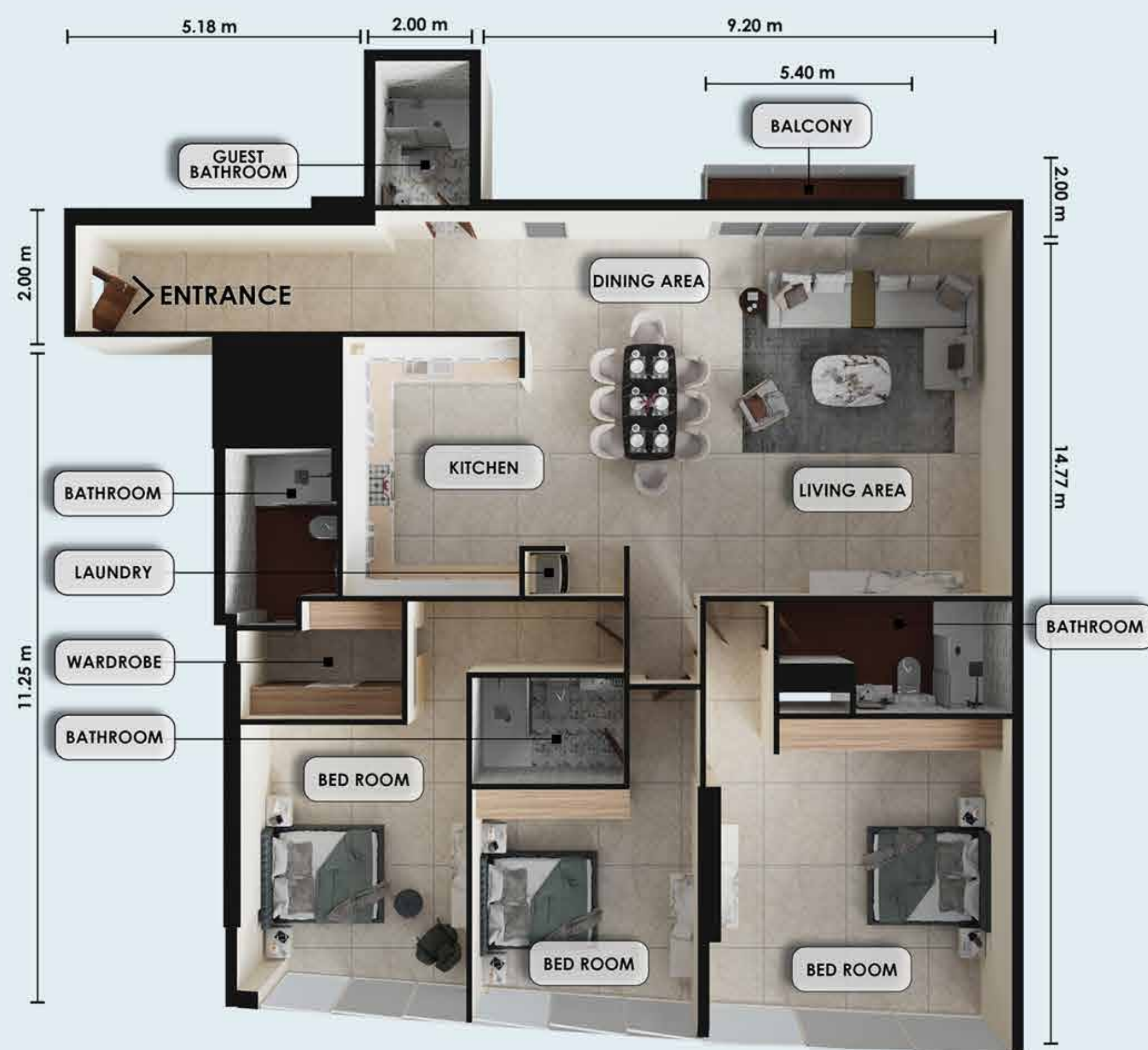
405, 505, 605, 705

1 Bedroom

Net Area: 853.57 sqft.
79.30 sqm.

Balcony: YES





Zenith J1, JVC

Typical 4th - 7th

406, 506, 606, 706

3 Bedrooms

Net Area: 2285.17 sqft.
212.30 sqm.

Balcony: YES





Zenith J1, JVC

Typical 8th - 10th

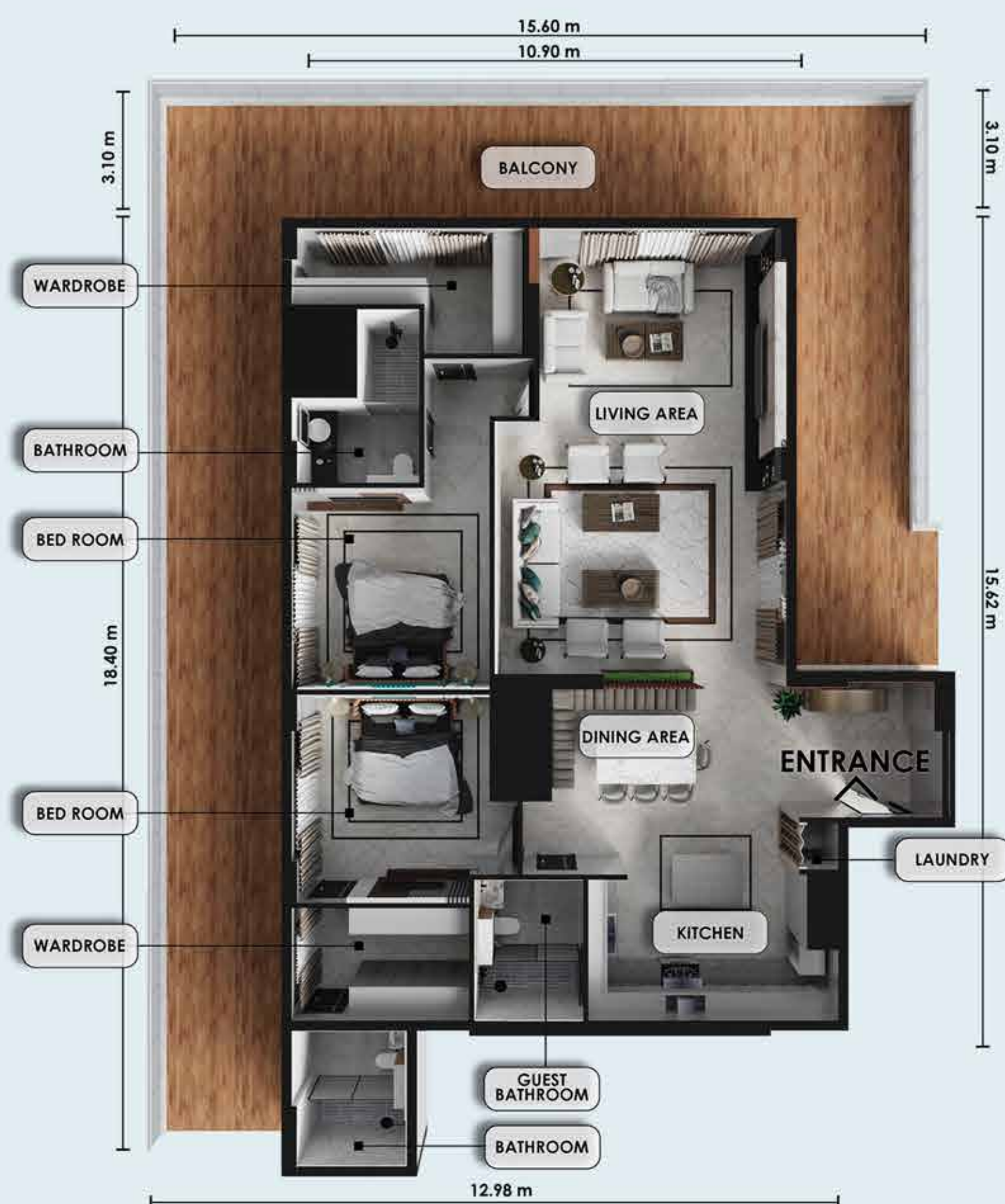
804, 904, 1004

1 Bedroom

Net Area: 773.50 sqft.
71.86 sqm.

Balcony: YES





Zenith **J1**, JVC

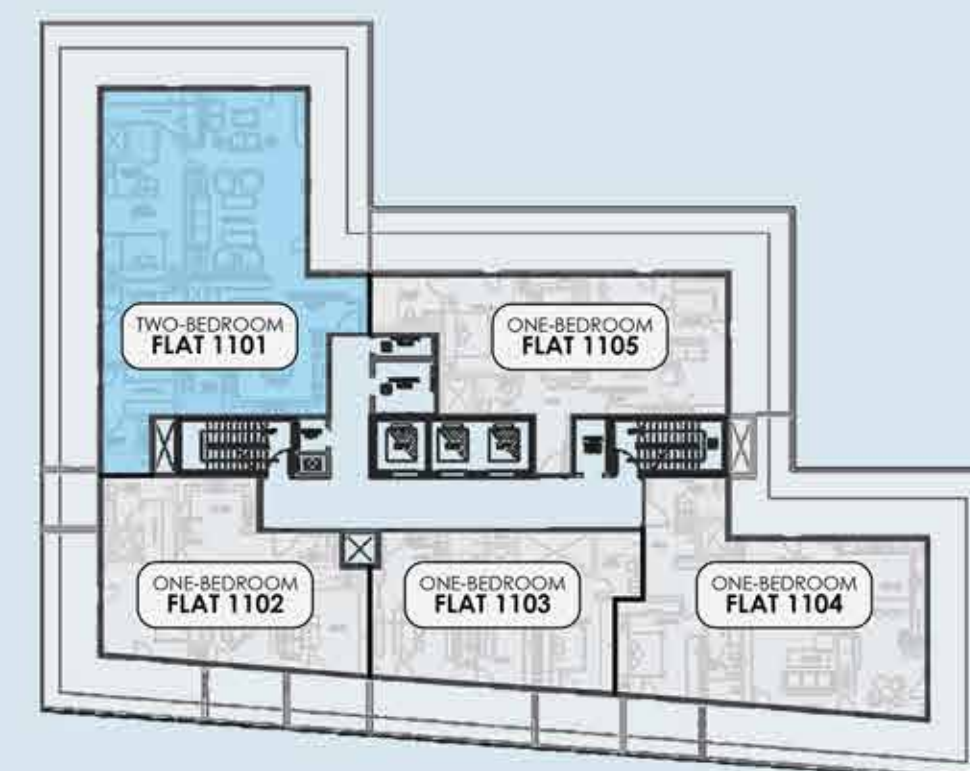
11th floor

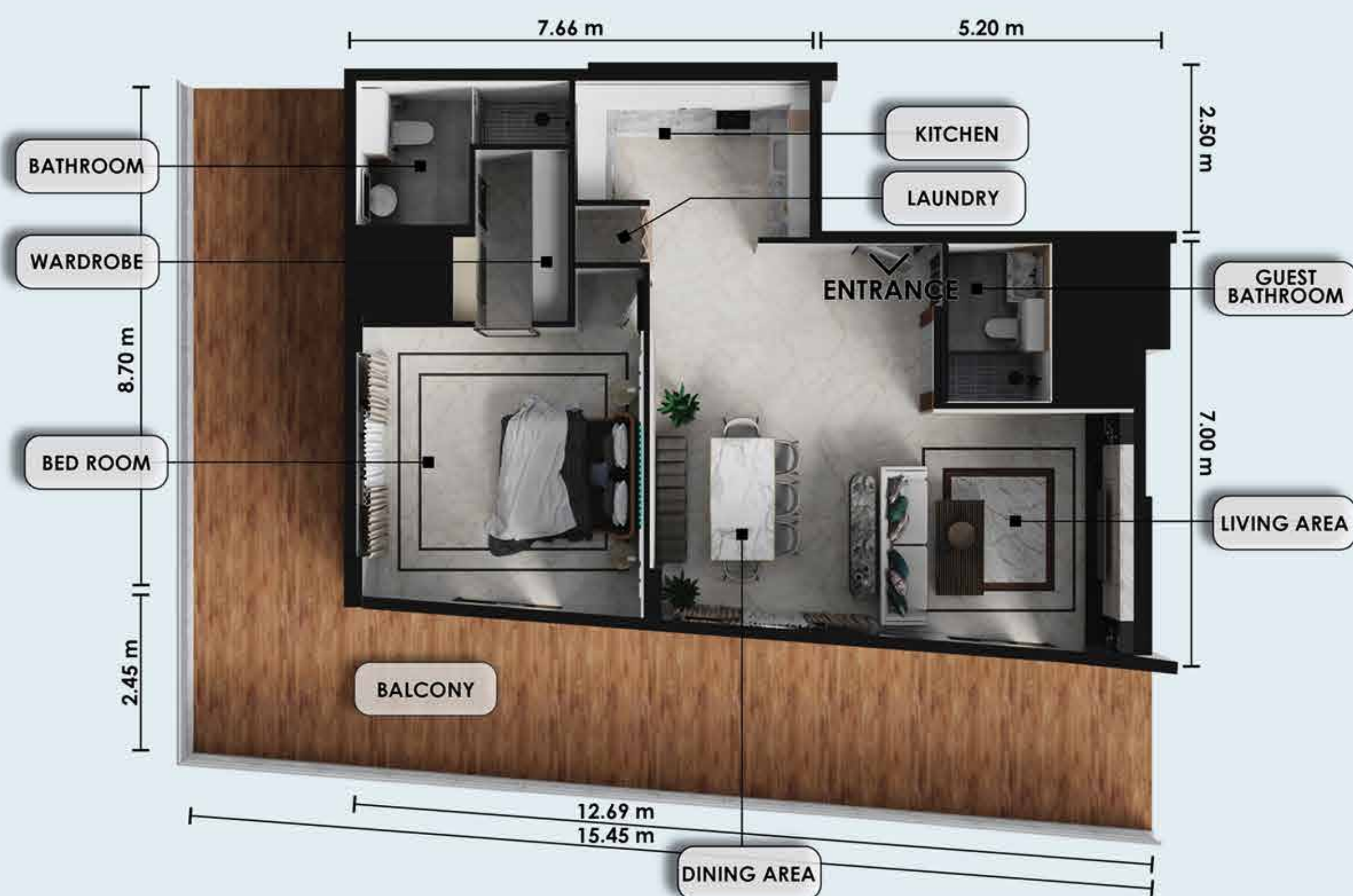
1101

2 Bedrooms

Net Area: 3167.71 sqft.
294.29 sqm.

Balcony: YES





Zenith J1, JVC

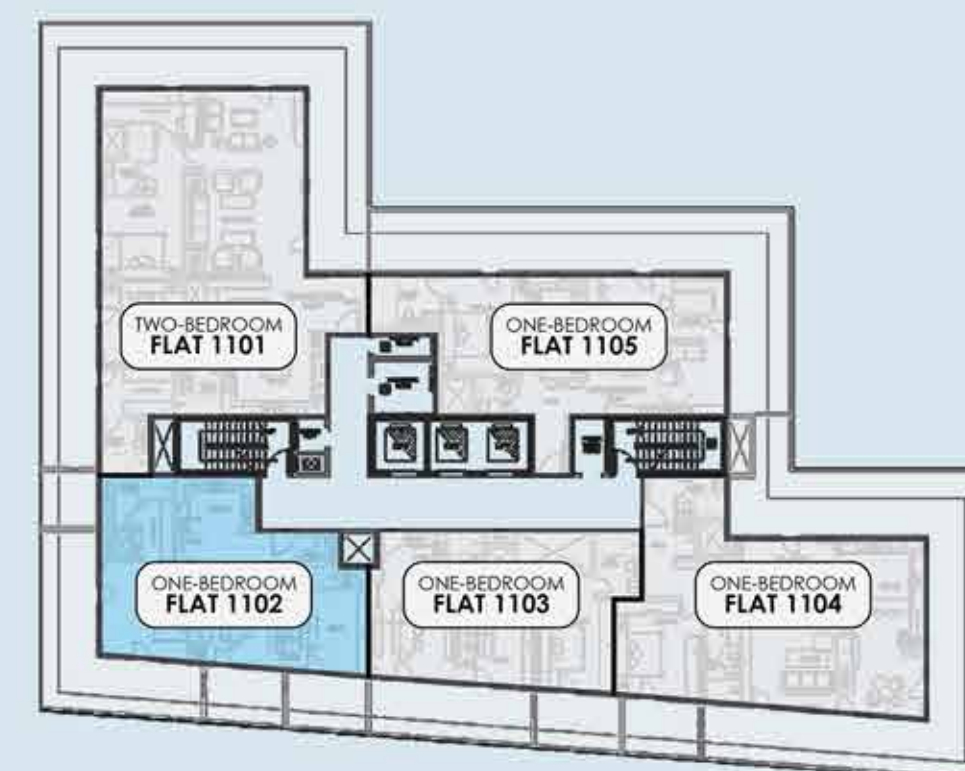
11th floor

1102

1 Bedroom

Net Area: 1755.91 sqft.
163.13 sqm.

Balcony: YES



Zenith **J1**, JVC

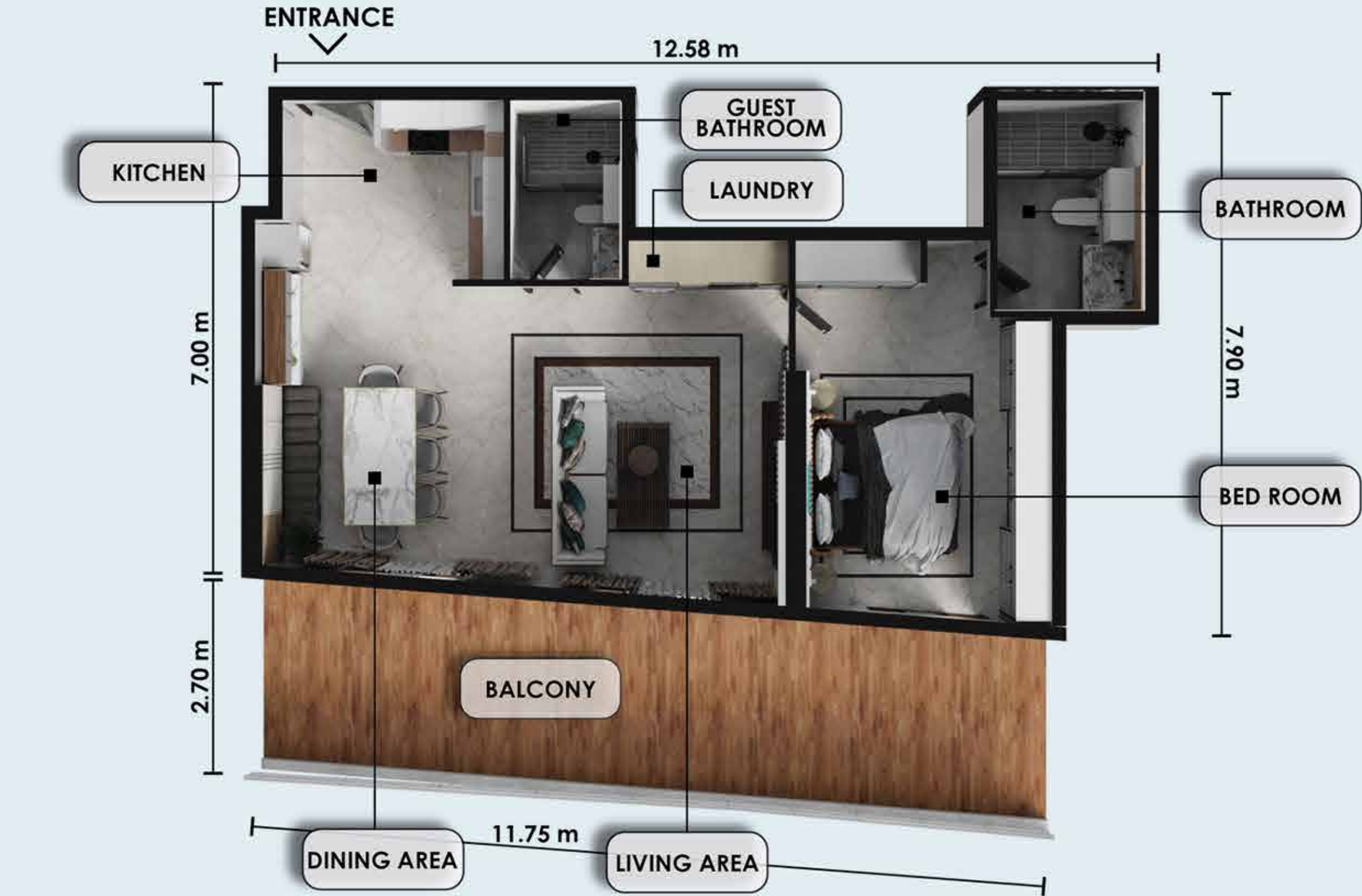
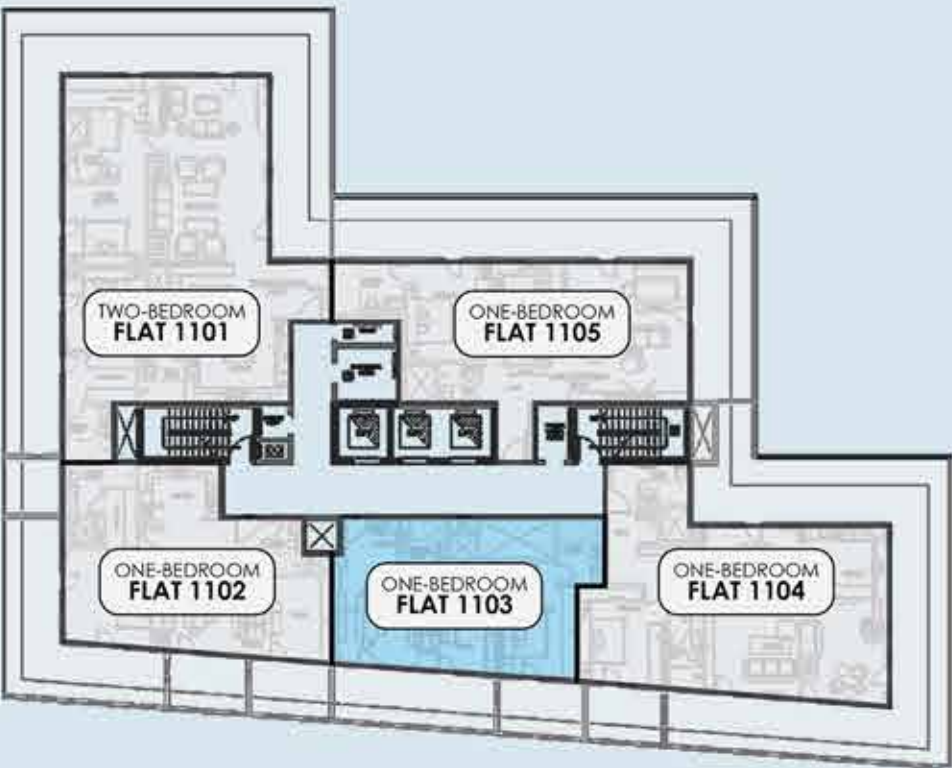
11th floor

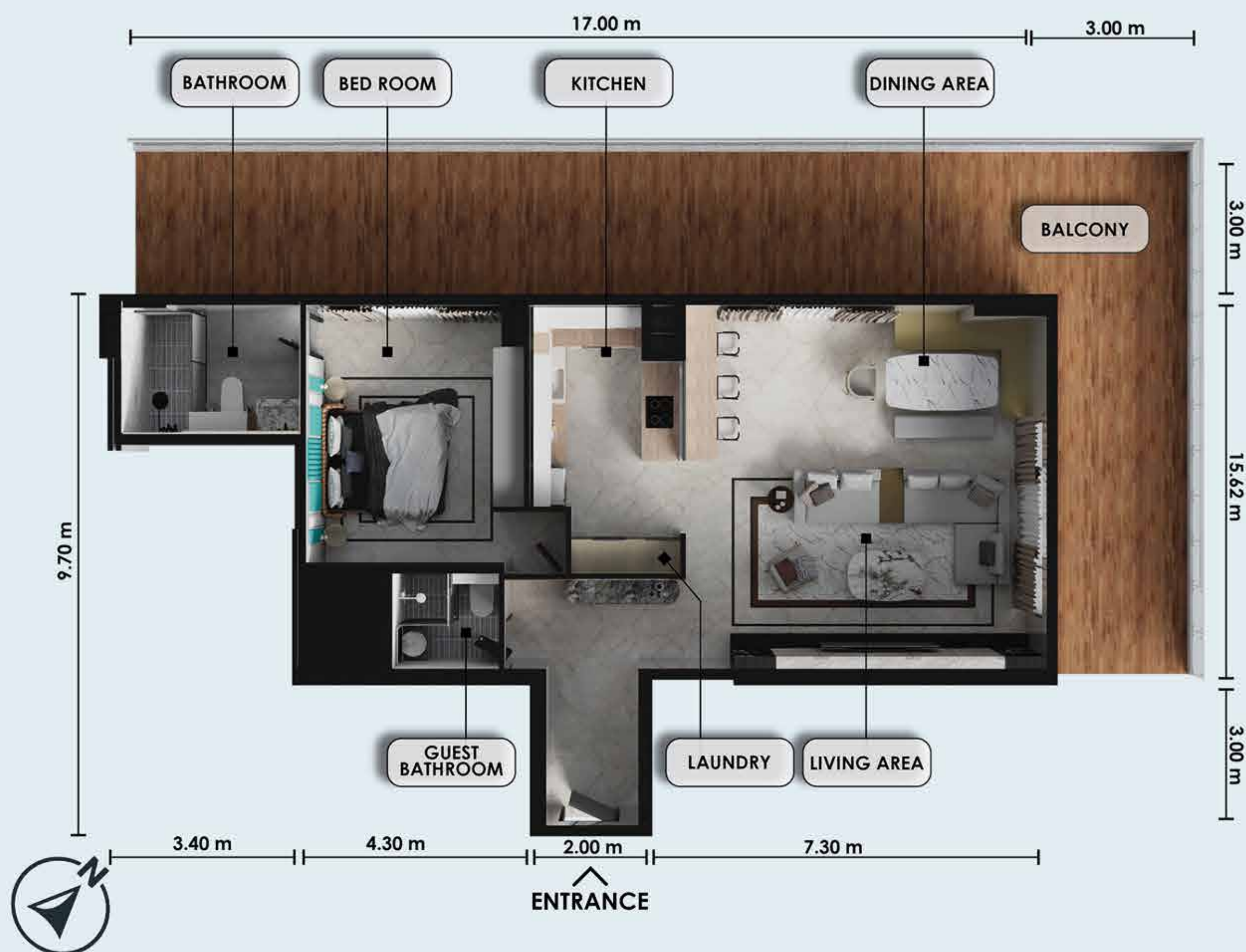
1103

1 Bedroom

Net Area: 1198.02 sqft.
111.30 sqm.

Balcony: YES





Zenith **J1**, JVC

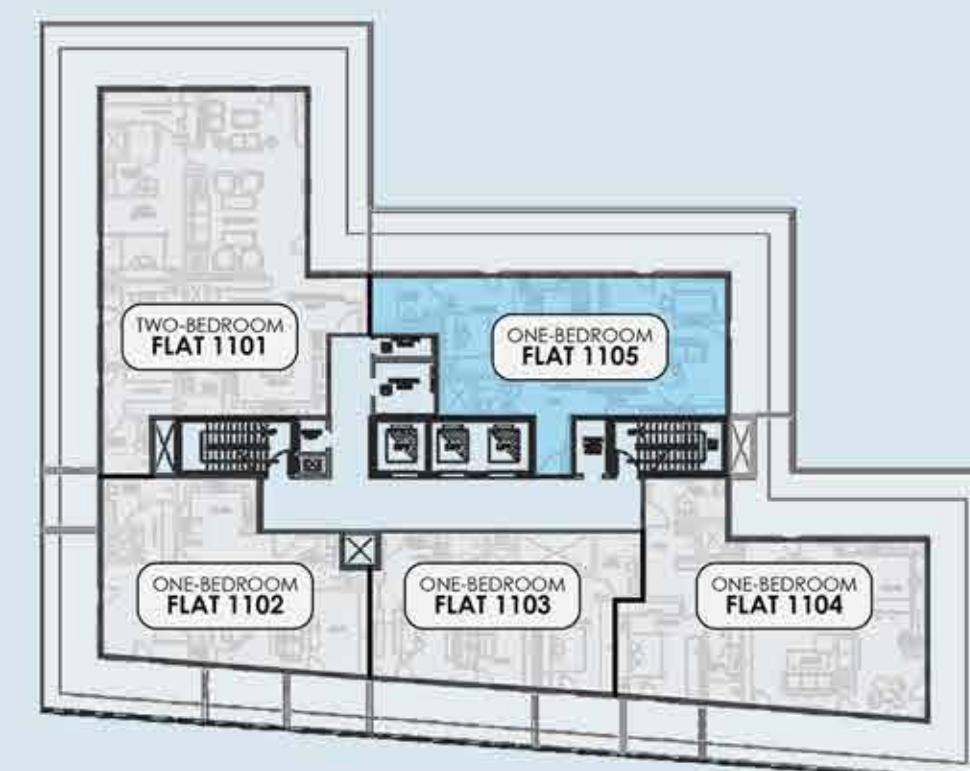
11th floor

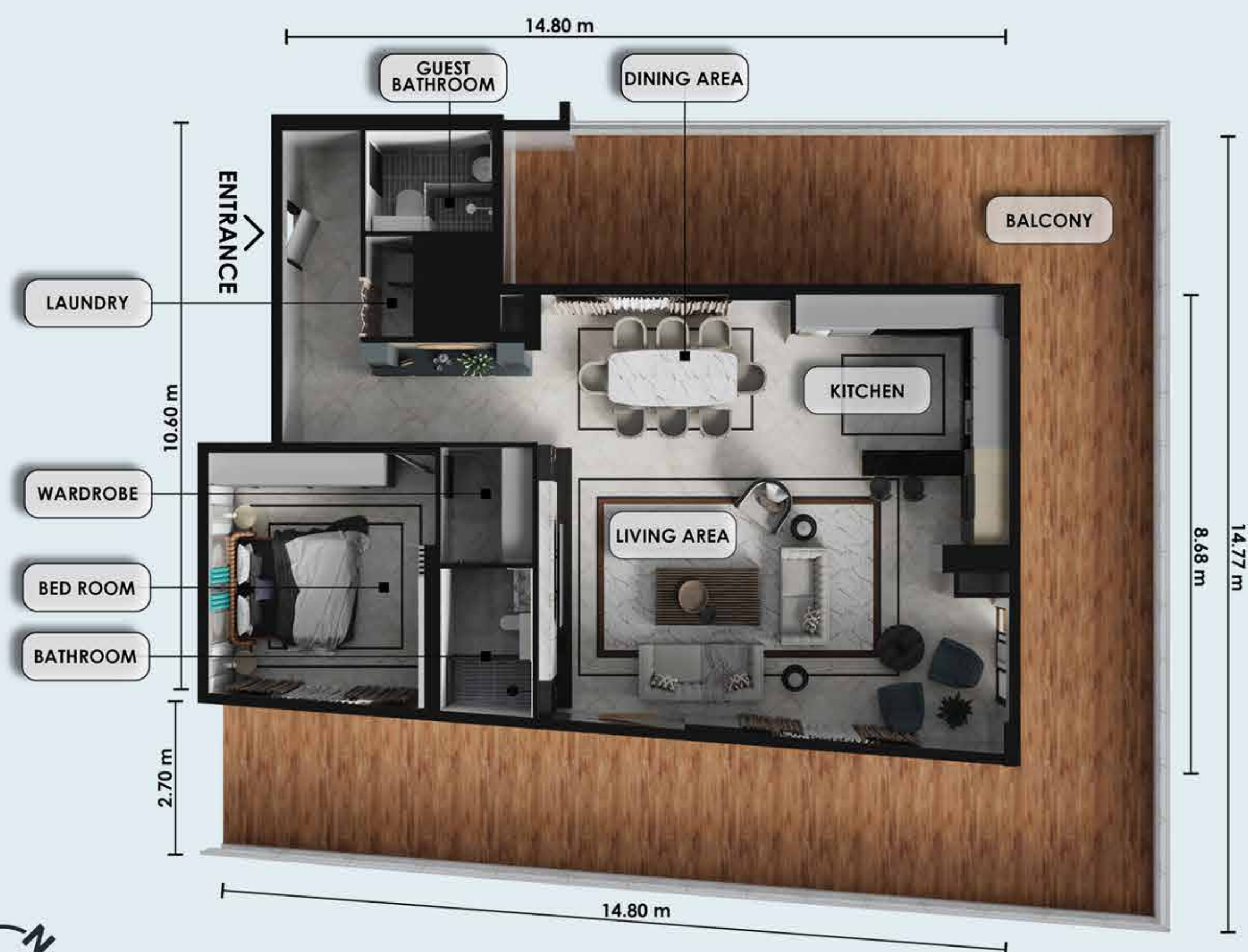
1105

1 Bedroom

Net Area: 2029.00 sqft.
188.50 sqm.

Balcony: YES





Zenith J1, JVC

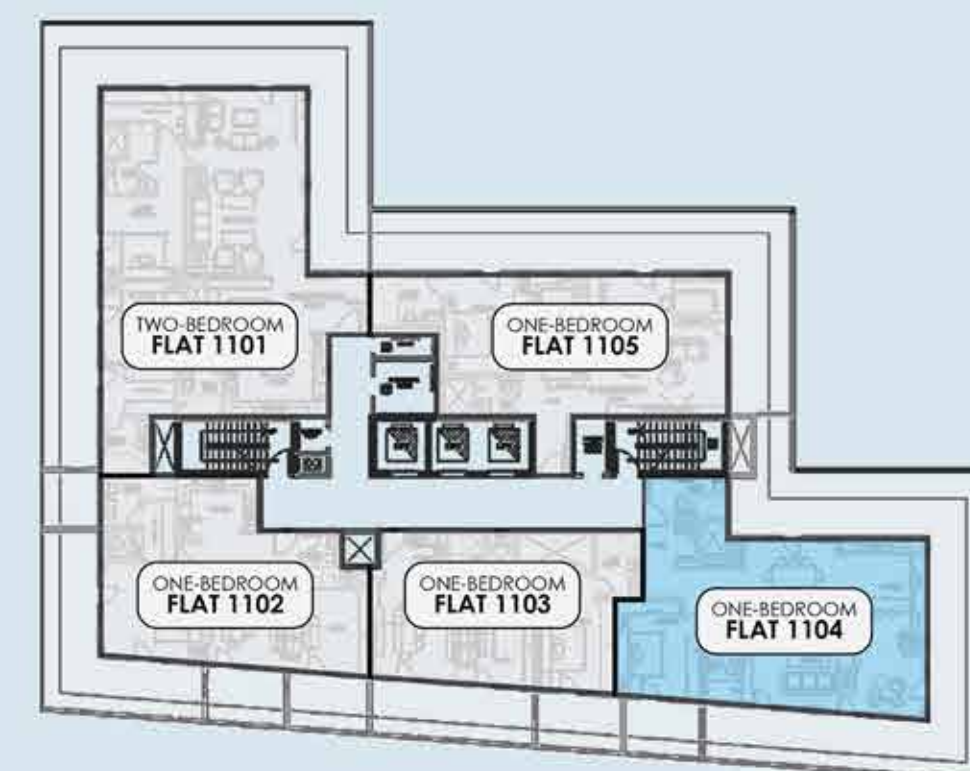
11th floor

1104

1 Bedroom

Net Area: 2551.05 sqft.
237.00 sqm.

Balcony: YES



Zenith Tower J1

Project Update

Date: 15 September 2025

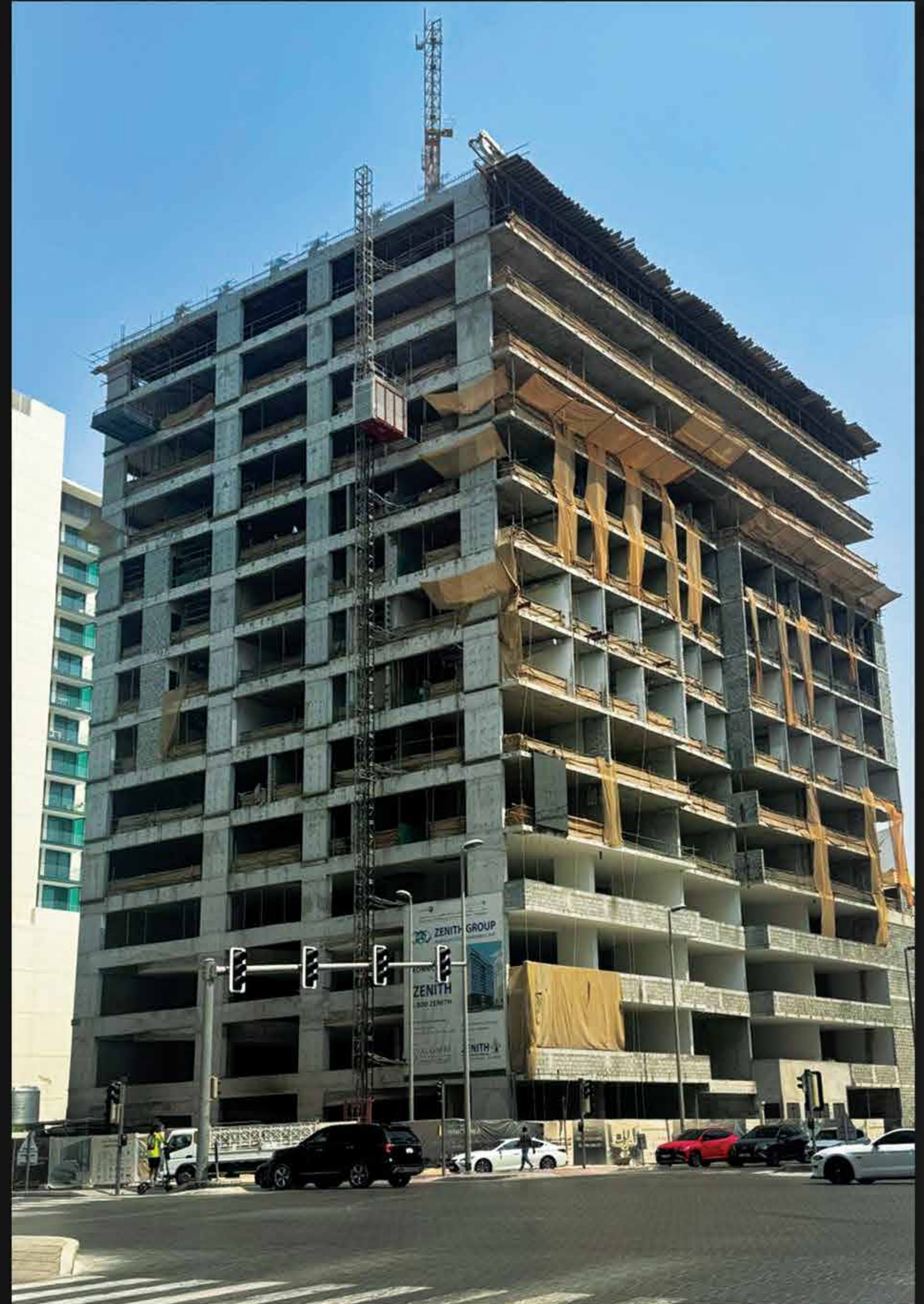
The construction of the building in JVC is in progress.

At present, the structural works have been completed, and the project has entered the interior execution phase.

Partitioning and the MEP team are carrying out works in the residential floors.

The facade team is working on the building's exterior.

Meanwhile, the interior design and carpentry teams are designing and constructing the cabinets and interior decor.



✉ info@zenithdeveloper.com
🌐 www.zenithdeveloper.com
📷 [zenith.developers](https://www.instagram.com/zenith.developers)